



Project Fact Sheet

2040 MASTER PLAN

Kalaeloa Barbers Point Harbor

GOALS

- Realistic and achievable
- Flexible to meet future needs
- Compatible with surrounding uses
- Consideration of environmental and navigational issues
- Consideration of safety and security
- A phased sequence of improvements.

SCHEDULE

The 2040 Master Plan is expected to be completed in 2014. It is anticipated that the design, permitting and development process for the entire harbor will take five to 20 years to complete.

CONTACT

Project updates will be available at <http://kalaeloaharbor2040.com>.

Questions may also be directed to Mr. Dean Watase; Hawai'i Department of Transportation, Harbors Division; phone: 808-587-1883 or email: dean.watase@hawaii.gov

For media inquiries please contact the DOT Public Information Officer at (808) 587-2160.

Last Updated: Sept. 17, 2013

BACKGROUND

The Hawai'i Department of Transportation, Harbors Division is updating its master plan for Kalaeloa Barbers Point Harbor (KBPH). KBPH encompasses approximately 300 acres (see map on reverse page). Originally conceived to alleviate some of Honolulu Harbors' congestion, KBPH has become the second busiest harbor after Honolulu Harbor and is now the primary bulk cargo harbor.

Due to this increased use, the harbor has been experiencing scheduling problems. Piers 5 and 6 are multi-use piers, handling general, container, dry bulk, neo bulk and liquid bulk cargos. The existing fuel hatches are located at the center of these heavily used piers. This creates scheduling conflicts between inter-island fuel barges and overseas dry-bulk cargo operations. There is continued demand for this finite linear berth space with berthing availability nearing capacity. DOT-H recently acquired 53 acres of land adjacent to the harbor which will be available for additional terminal and storage space.

Projections for Hawaii's economy (2040) dictate the need for development of expanded and well-planned commercial harbor facilities. The purpose of the Kalaeloa Barbers Point Harbor 2040 Master Plan is to forecast maritime activities at KBPH for the next 25 years, and provide infrastructure to support these activities.

THE PROJECT

Recommendations for Kalaeloa Barbers Point Harbor may include the expansion of the harbor with additional piers and yards to accommodate expanded cargo capabilities. Efforts to deepen the harbor and widen the entrance channel will be coordinated with the U. S. Army Corps of Engineers.

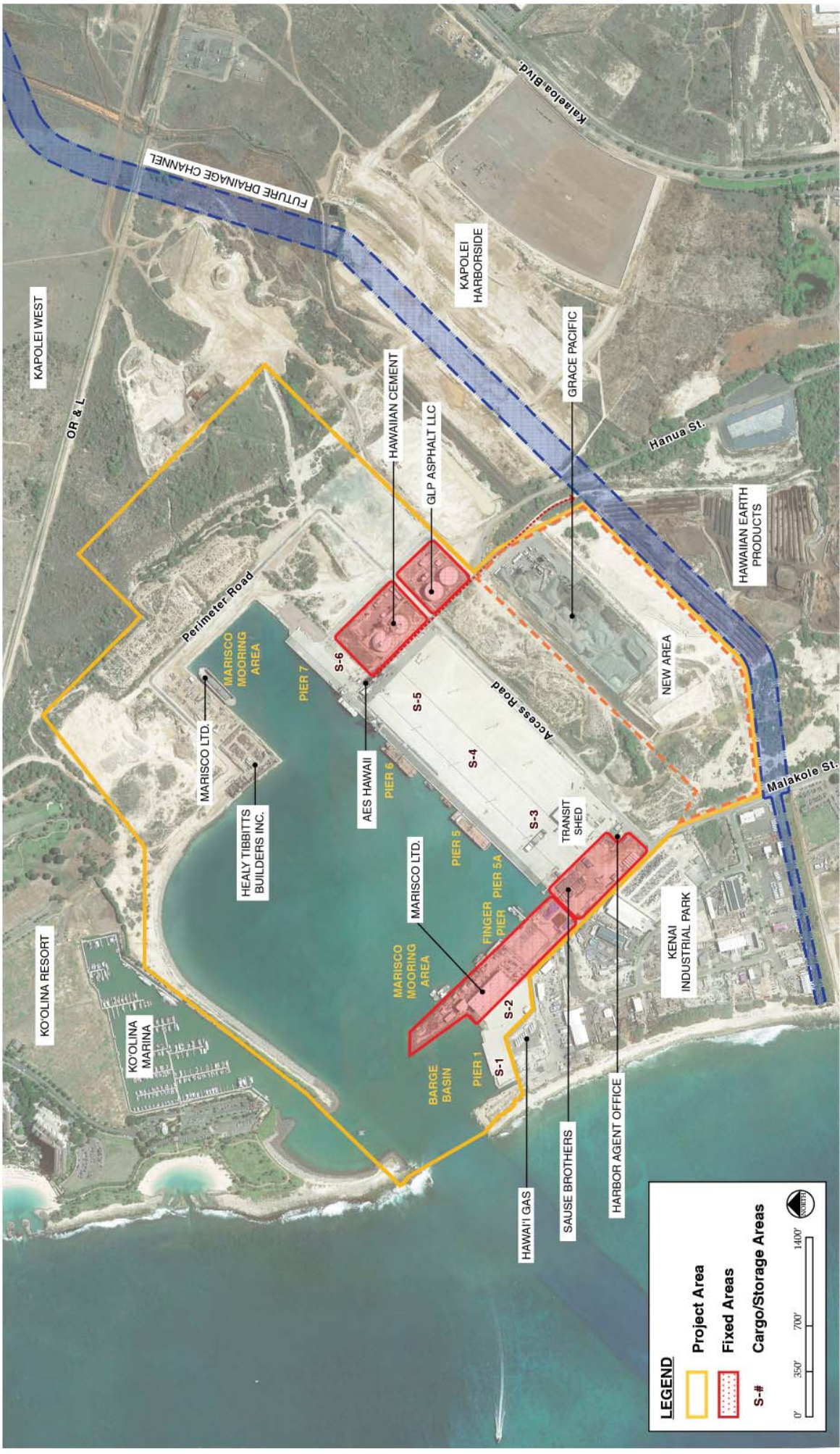
To meet future growth, the KBPH 2040 Master Plan will recommend layout configurations for berthing and land use alternatives to accommodate a range of cargo types. This may also include expanding the mauka basin to allow for increased linear berthing space. Additionally, ancillary facilities such as security fencing and lighting will be recommended to enable 24-hour transit operations.

Alignment of the new Hanua Street entrance and circulation patterns within KBPH will be analyzed to provide sufficient access for efficient cargo movement between ships and consumers. The harbor offices may also be relocated to the new entrance outside the security perimeter. To support this planned growth, the utility infrastructure will need to be improved.



Coal is being unloaded at KBPH Pier 6 by a bulk unloader, which is then carried by a conveyor system to the AES plant.

The mission of the Harbors Division is to effectively manage and operate a statewide commercial harbors system that facilitates the efficient movement of people and goods to, from and between the Hawaiian Islands.



Existing Conditions

Kalaeloa Barbers Point Harbor